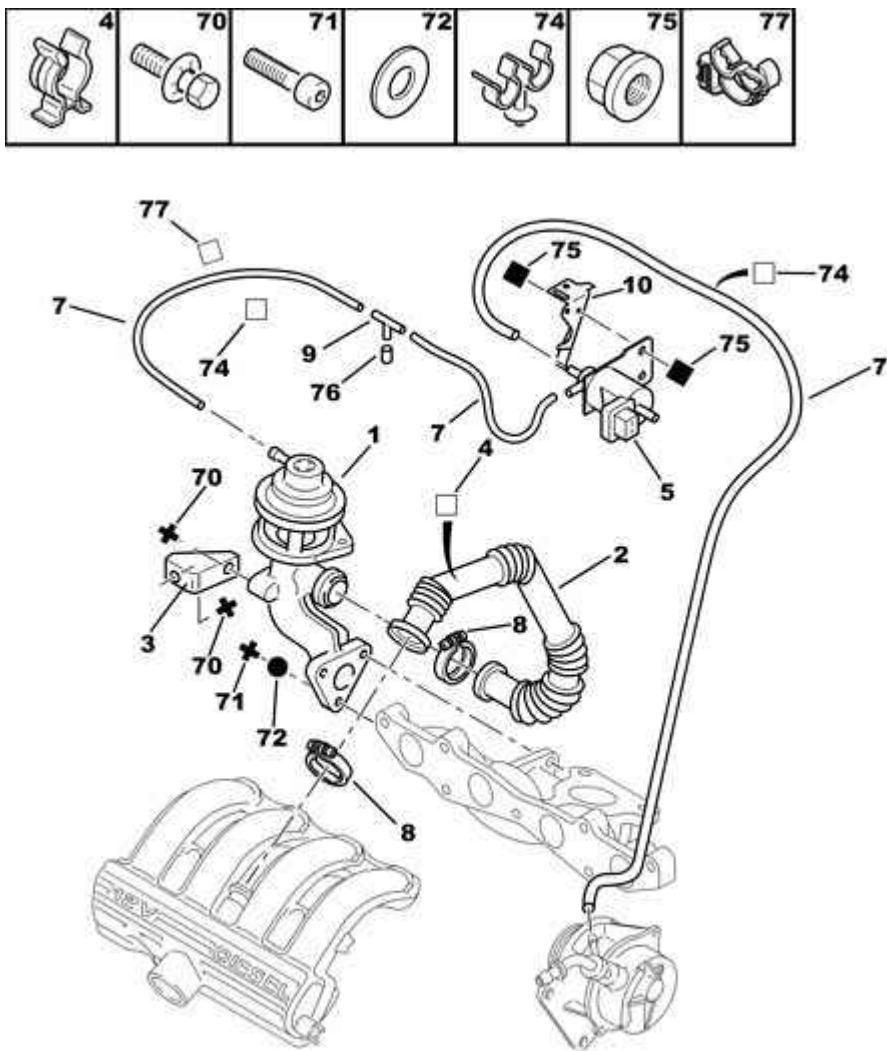


23/07/11 16J80A

GAS RECYCLING CIRCUIT*TURBO DIESEL XUD11BTE AND EEC 95 DEPOLL (ENGINE) UNTIL RPO 07741*

05/2013

00009114

01	1628 6C	NFP	01	VALVE EGR
02	1628 6E	NFP	01	GAS RECYCLING TUBE
03	1628 R4	NFP	01	GAS RECYCLING VALVE BRACKET
04	1628 6F	NFP	01	PIPE FASTENER CLIP 1T 25
05	1628 V3		01	ELECTRO VALVE
07	5953 06		02	POLLUTION CONTROL DEPRESS HOSE CL 3,5X8-5000
08	1628 3J		02	TUBE COLLAR DIAM 35 A 38 LARG 9
09	1622 A4		01	AIR CIRCUIT 3 WAY UNION 5-5-5
10	1628 9Q	NFP	01	POLLUT.CONT.ELECT.VALV.BRACKET
70	5037 39		02	SELF LOCKING SELF-TAP SCREWS 8X125-16
71	6913 F6	RP 6913 N8	03 01	SOCKET CHEESEHEAD SCREW DIAM 6X100-25
72	6947 77		03	PLAIN WASHER DIAM 6X12-1,2
74	6990 41	NFP	02	HOG RING 5-8
75	6936 33		02	NUT WITH BASE DIAM 6X100-8-13
76	6983 19		01	PLUG TOWBALL DIAM 6,2 - 13 RUBBER - C001-
77	6992 C2		01	HOG RING DIAM 12